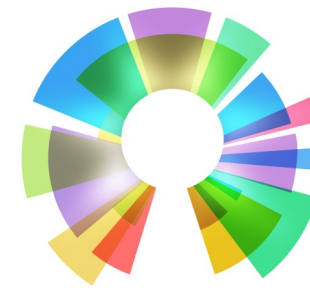


Story from one of our students who has a heart for marginalised women in her community:

It's been very helpful to learn how to have a deeper understanding of my community and the different people groups within it. As I build new relationships in the community this insight has enabled me to look beyond someone's surface behaviour and understand more about their beliefs and culture. This has helped me in discerning how to listen, engage and convey through my conversations and activities, the Gospel message in a more engaging and relevant way for them. *(Belinda Ngugi, Beckton)*



ST CEDD CENTRE
FOR PIONEER MISSION

The St Cedd Centre for Pioneer Mission

c/o The Church of the Good Shepherd
3 Redriff Road
Romford, RM7 8HD

Tel: 01708 745626 Email: dmharrigan@thegoodshepherd.co.uk

www.stceddcentre.co.uk

www.chelmsford.anglican.org

www.cms-uk.org



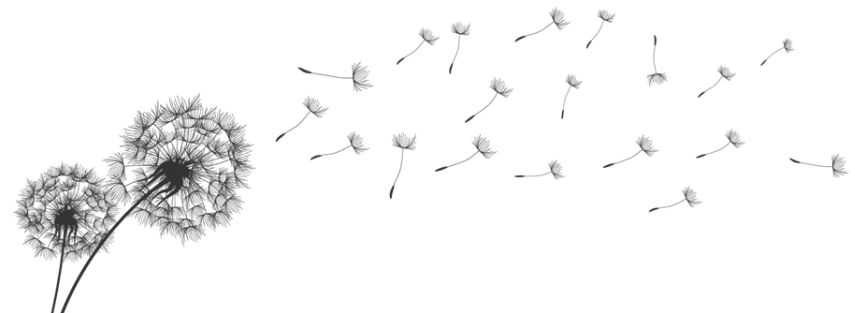
The Church of England
in Essex and East London
Diocese of Chelmsford



Tomorrow can be different for us all

Introduction to... Authorised Lay Pioneering

2020



St Cedd Centre for Pioneer Mission

Lay Pioneer Ministry

- Are there people in your parish who will probably never attend a church service?
- Do you feel the pain of social needs or injustice?
- Do you long for others to know God's love and discover the good news of Jesus?
- How can you see God at work and join in his mission?
- Do you have a glimmer of an idea to make a difference where you are, starting with what you have?
- Can the small fit where the big doesn't?

If so the St Cedd Centre would like to introduce to you its purpose to equip Authorised Lay Pioneers.

The vision is to provide an environment to identify, equip and support Christians across the Chelmsford Diocese to serve as pioneer ministers. Having successfully completed the formation programme, they will be authorised by the Bishop and sent out by their parish to minister beyond Sunday services and church buildings. They will seek to bring transformation in their communities, to call others to follow Jesus to become disciples and create new Christian communities / Fresh Expressions of Church. Others may engage in social activism or business entrepreneurship with Kingdom of God values.

Since its launch on All Saints' Day 2015, the first intake of students at the St Cedd Centre completed the course in July 2018 and were authorised in October 2018. The second intake of students began in April 2018 and completed the course at the end of 2019. Formation is by reflective practice on an actual pioneering project with teaching from the Church Mission Society (CMS), who bring over 200 years of contextual mission experience.



The Formation Programme

We are now taking stock prior to introducing a further intake and are planning a number of Taster days for people to come and see what we are all about.

The St Cedd Centre for Pioneer Mission course is spread over a 12-18 month period and divided into 6 Modules. In parallel you will be working on a pioneer mission initiative of your choice, and meeting in facilitated learning sets to reflect on practice.

On completion of the course you will be authorised by the Bishop of Chelmsford and certificate endorsed by the Church Mission Society (CMS) and then locally commissioned in your parish or Mission and Ministry Unit (MMU).

All the teaching will be given jointly by the St Cedd Core Team and CMS. You will also be given access to CMS online portal "Moodle" and be able to access material to help you develop.

The course will be an apprenticeship style model with some written / creative assessment. Teaching is given mainly on Saturdays 9.30am to 2.30pm. You will be required to have an idea for a pioneering initiative; you will keep a journal during the course and be part of a learning set (meets on some evenings). At the end you will give a presentation to your learning set and invite your incumbent.



The dates for the current Taster days are:

1. 14th March
2. 16th May
3. 18th July

Further details can be obtained from the office, details of which are overleaf.